

Central Oregon Skyglow Measurement Network

Methods and
Results from July 2019 – March 2020

Addendum
Rimrock Ranch
Data from April – June, 2020

Bill Kowalik
IDA Oregon Chapter
June 24, 2020



INTERNATIONAL DARK-SKY ASSOCIATION
OREGON CHAPTER

Rimrock Ranch Sky Quality Monitor Data

First data in –
June 24, 2020

- SQM installed at Rimrock Ranch in Central Oregon by Jim Hammond of the Sisters Astronomy Club, Sisters, Oregon
- First two months of data: April 21 – June 23, 2020
- Analyzed the Rimrock Ranch data through the same workflow as the rest of the SQM sites in Central Oregon, as described in [IDA Oregon Technical Report #2](#)
- Analysis of the first two months of data shows that the Rimrock Ranch location has very dark skies –
 - The average “red trend” value is 21.79 magnitudes/arc second squared, and
 - The overall cloudy sky character shows that clouds appear dark, another indicator of minimal light pollution from the ground at that site
 - These data are very encouraging and need to be considered in the context that
 - They represent a limited time period, and that
 - The data from the other SQM sites in Central Oregon in Technical Report #2 do not yet include data from this same time period – perhaps several of those sites also had equally dark skies during this period?

All SQM Sites – Central Oregon Skyglow Measurement Network

Summary of SQM Measurements from July 2019 – April 2020

Data Included in plot:

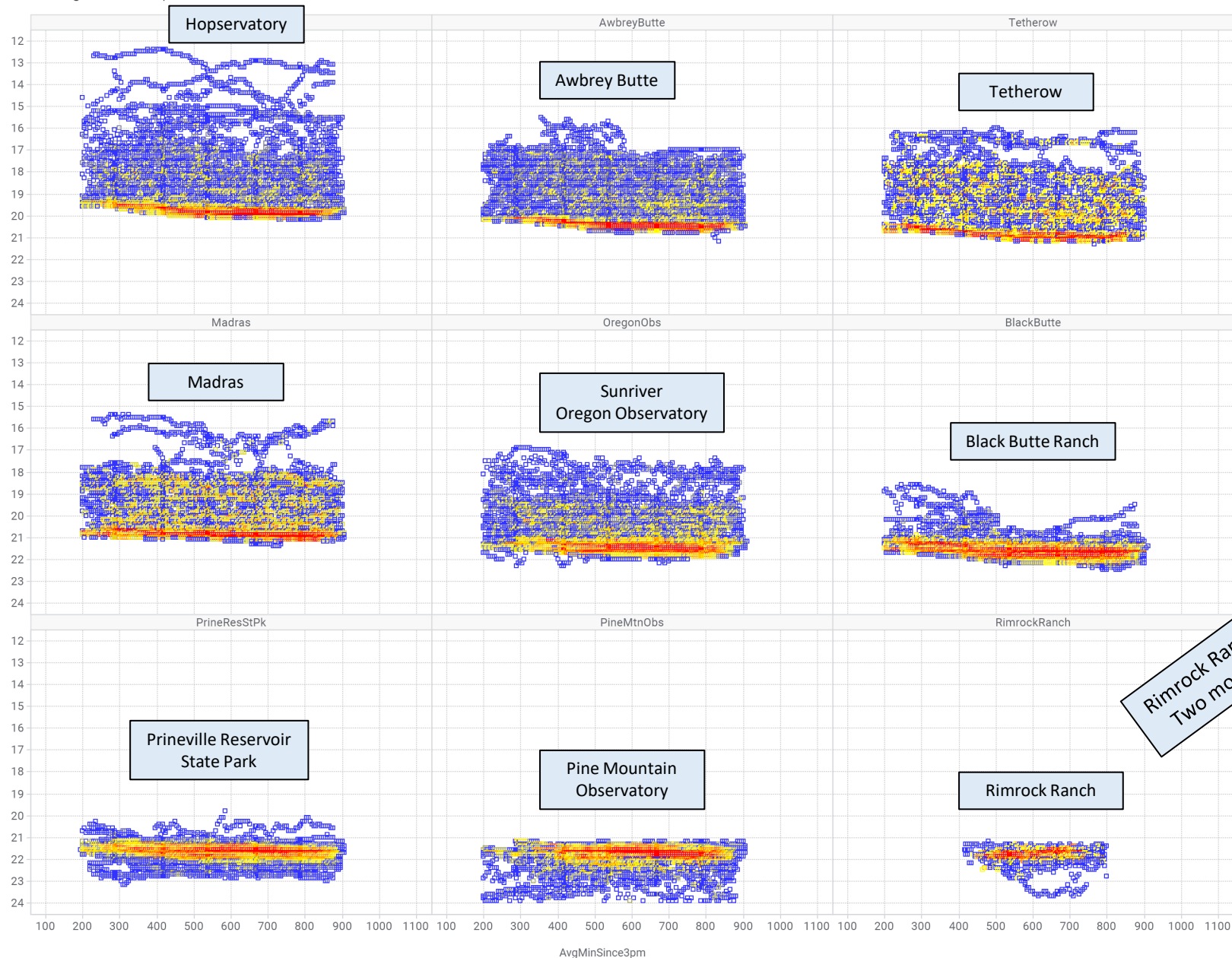
SQM measurements every 5 minutes, all night long, All nights
Moon below -10 degrees, Sun below -18 degrees

AvgMsas vs. AvgMinSince3pm

Magnitudes per Arc Second Squared

AvgMsas

Magnitudes per Arc Second Squared



Trellis by:
Location
Marker by:
(Row Number)
Color by:
PlotDensity
100.00%
50.00%
10.00%
1.00%

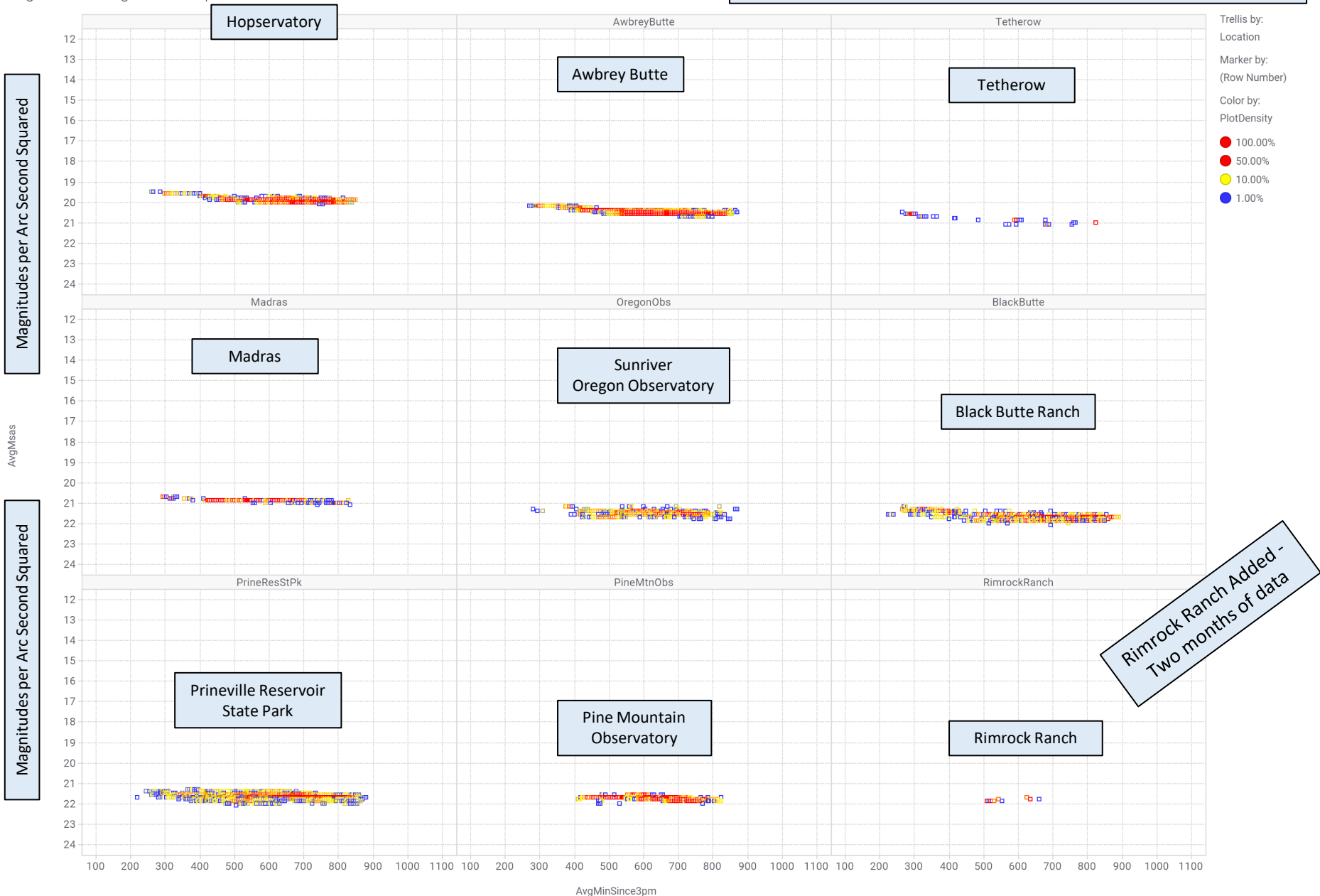
Rimrock Ranch Added -
Two months of data

All SQM Sites – Central Oregon Skyglow Measurement Network

Summary of SQM Measurements from July 2019 – April 2020

Data Included in plot:
 SQM measurements every 5 minutes, all night long, All nights
 Moon below -10 degrees, Sun below -18 degrees
 Density plot count of 8 or more per bin

AvgMsas vs. AvgMinSince3pm

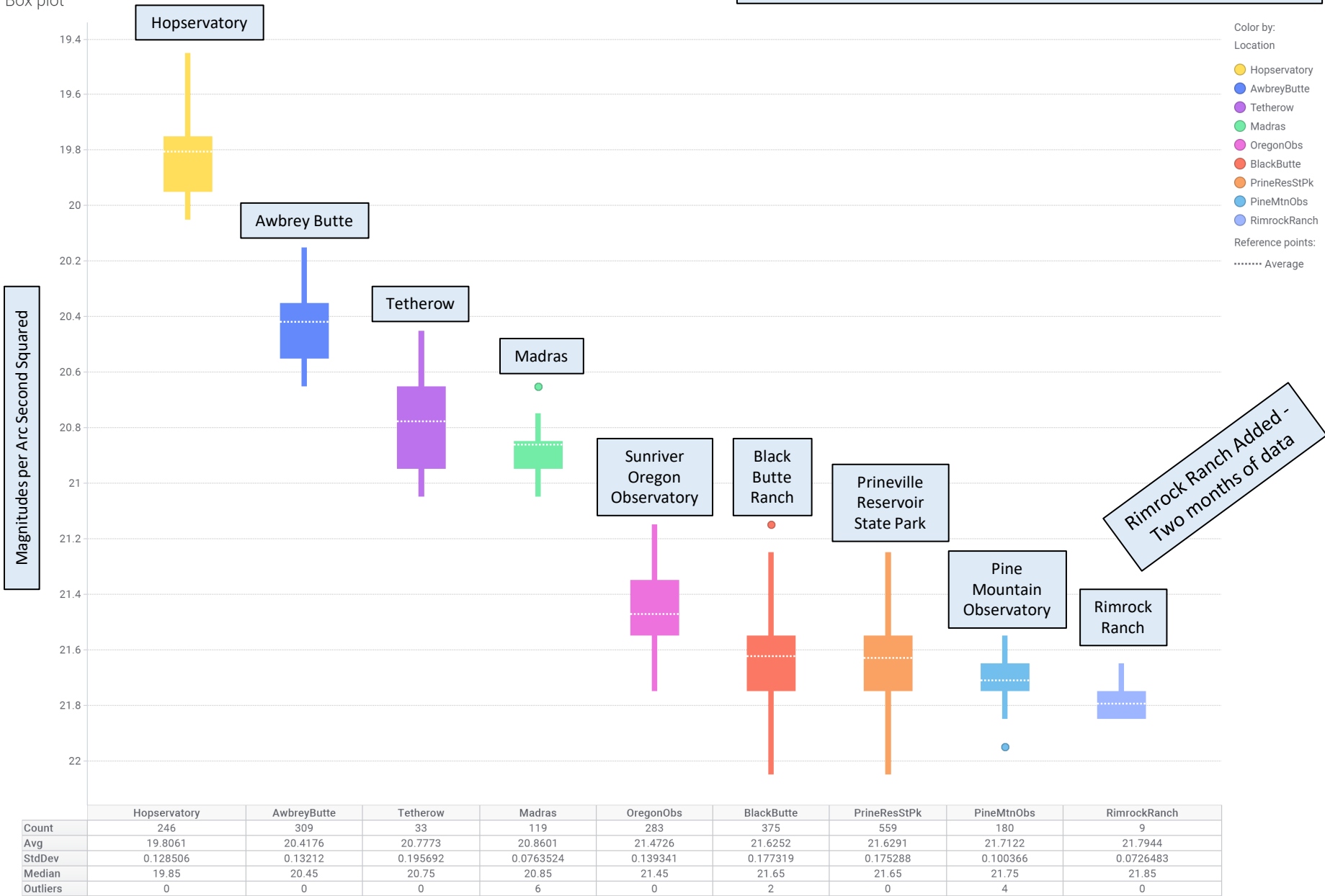


All SQM Sites – Central Oregon Skyglow Measurement Network

Summary of SQM Measurements from July 2019 – April 2020

Data Included in plot:
 SQM measurements every 5 minutes, all night long, All nights
 Moon below -10 degrees, Sun below -18 degrees
 Density plot count of 8 or more per bin

Box plot



Location

All SQM Sites – Central Oregon Skyglow Measurement Network
Summary of SQM Measurements from July 2019 – April 2020

Data Included in plot:

SQM measurements every 5 minutes, all night long, All nights
Moon below -10 degrees, Sun below -18 degrees
Density plot count of 8 or more per bin

Summary Statistics for the Box Plot data of the previous slide

Location	Mean	X Brighter	Std Dev	Median	Count	Outliers
Hopservatory	19.81	5.7	0.13	19.85	246	0
Awbrey Butte	20.42	3.3	0.13	20.45	309	0
Tetherow	20.78	2.3	0.19	20.75	33	0
Madras	20.86	2.2	0.08	20.85	119	6
Oregon Obs Sunriver	21.47	1.2	0.14	21.45	283	0
Black Butte Ranch	21.62	1.1	0.18	21.65	375	2
Prineville Res St. Pk	21.63	1.1	0.18	21.65	559	0
Pine Mtn Obs	21.71	1.0	0.1	21.75	180	4
Rimrock Ranch	21.79	0.9	0.07	21.85	9	0

Rimrock Ranch Added -
Two months of data